

# Viaduct Gardens, London

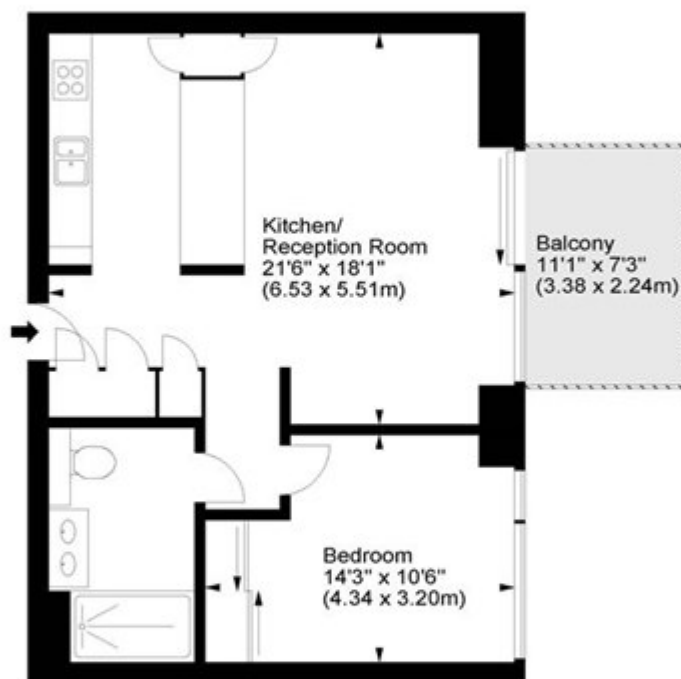
£850,000

---

## Legacy Building, SW11



Approx. Gross Internal Area  
609 Sq Ft - 56.58 Sq M



Sixth Floor

For illustration purposes only. Not to scale.  
All measurements are taken and shown at floor level.  
[www.r3photography.co.uk](http://www.r3photography.co.uk) © Photography / Floor Plans / Lease Plans / EPCs

