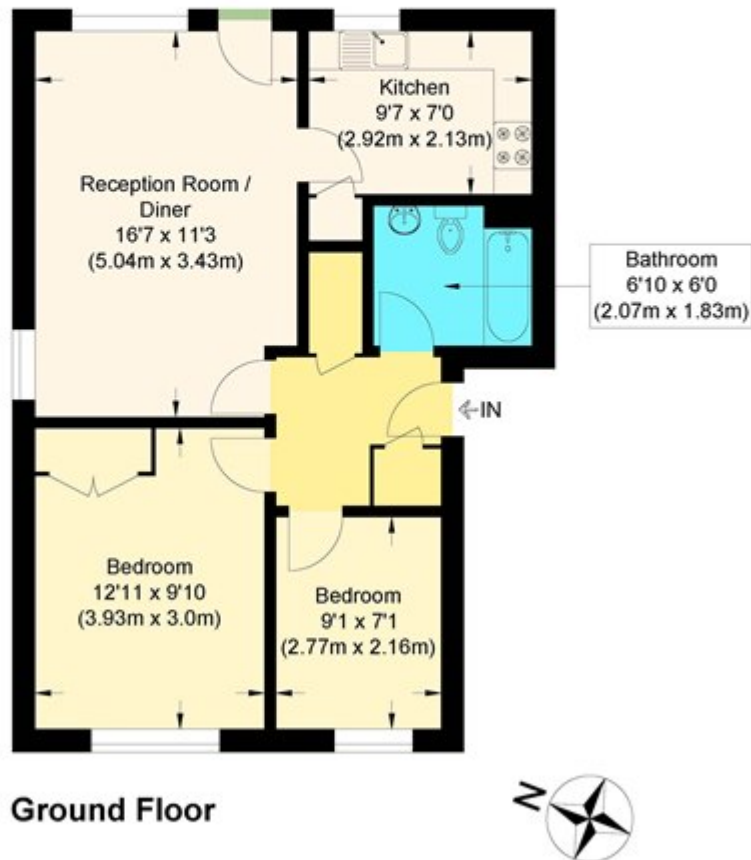


GREEN POND ROAD , WALTHAMSTOW

£310,000



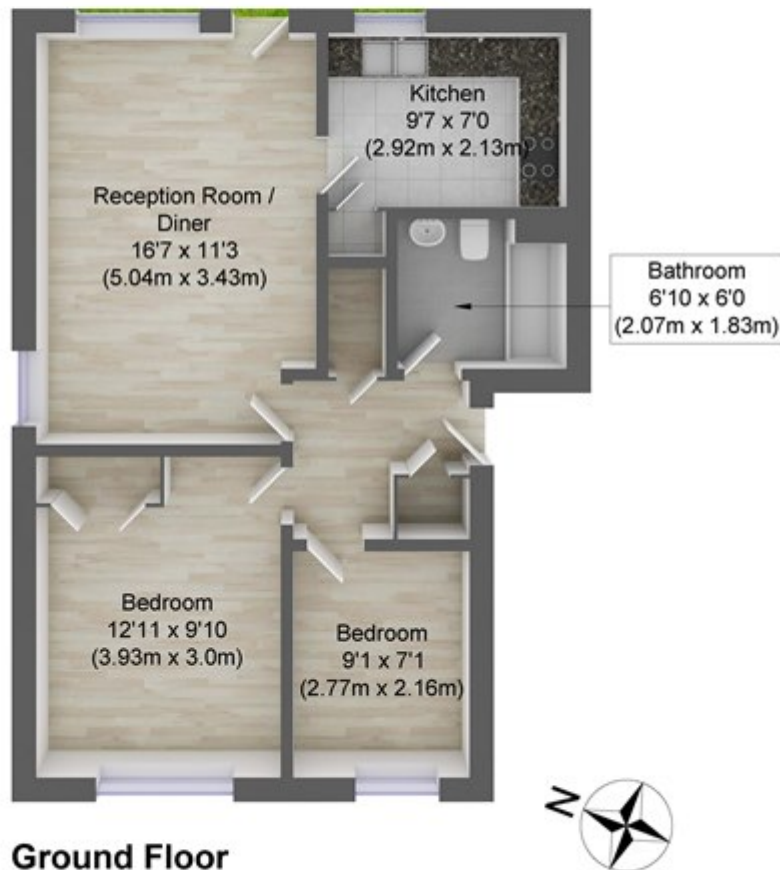
Brook Court, E17

Approximate Gross Internal Floor Area : 53.30 sq m / 573.71 sq ft

Illustration for identification purposes only, measurements are approximate, not to scale.

GREEN POND ROAD , WALTHAMSTOW

£310,000



Ground Floor

Brook Court, E17

Approximate Gross Internal Floor Area : 53.30 sq m / 573.71 sq ft

Illustration for identification purposes only, measurements are approximate, not to scale.