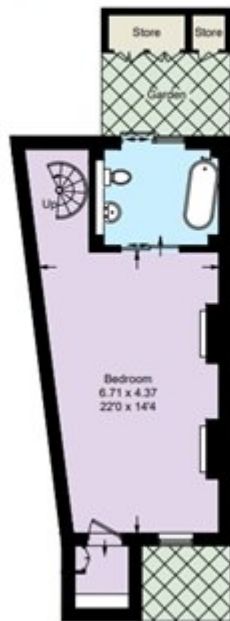


Lonsdale Road, London

£1,400,000 Freehold

Lonsdale Road, W11

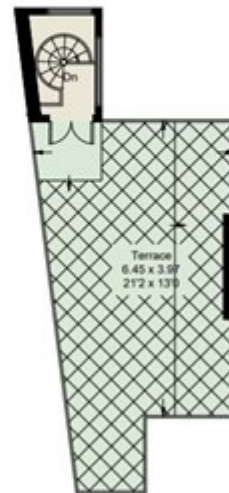
Approximate Area = 861 sq ft / 80 sq m
Store = 21 sq ft / 2 sq m
Total = 882 sq ft / 82 sq m



Lower Ground Floor



Ground Floor



First Floor Terrace

This plan is for layout guidance only. Not drawn to scale unless stated. Windows and door openings are approximate. Whilst every care is taken in the preparation of this plan, please check all dimensions, shapes and compass bearings before making any decisions reliant upon them. (ID1023164)