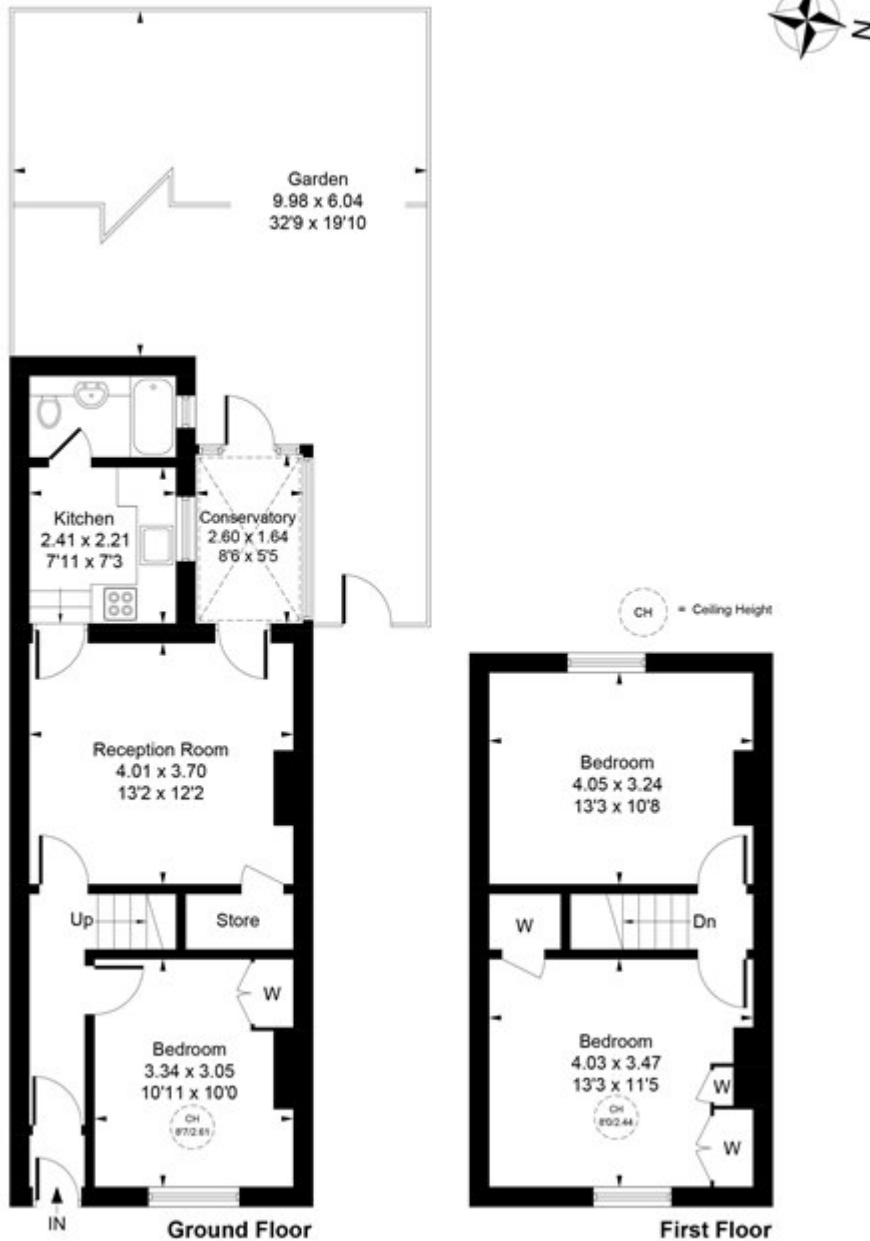


# Gresham Road, Harlesden

## £489,950 Freehold

---

Approximate Gross Internal Area = 80.79 sq m / 870 sq ft



Whilst every attempt has been made to ensure the accuracy of the floor plan contained here, measurements of doors, windows, rooms and any other items are approximate and no responsibility is taken for any error, omission, or mis-statement.  
This plan is for illustrative purposes only and should be used as such by any prospective purchaser.  
© Vizion Property Marketing Produced for Living With Hart