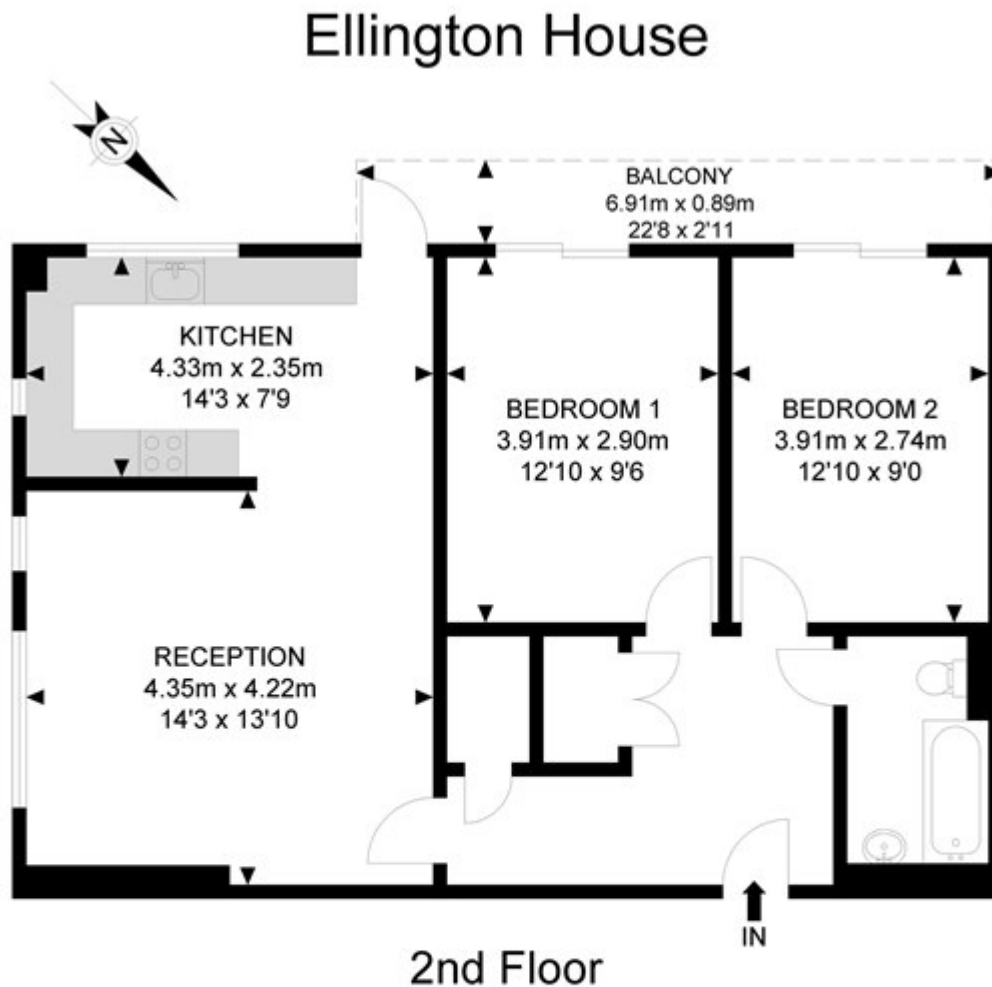


Ellington House, Ashmore Road, Woolwich

£1,300 PCM



APPROX. GROSS INTERNAL FLOOR AREA 743.78 SQ FT / 69.10 SQM

APPROX. GROSS EXTERNAL FLOOR AREA 65.65 SQ FT / 6.10 SQM

Whilst every attempt has been made to ensure the accuracy of the floor plan contained here, measurements of doors, windows, rooms and any other items are approximates and no responsibility is taken for any error, omission or mis-statement, this plan is for illustrative purposes only and should be used as such by any prospective purchaser. The service, system and appliances shown have not been tested and no guarantee as to their operability or efficiency can be given.

© SpacePhoto
Photography and Floor Plan