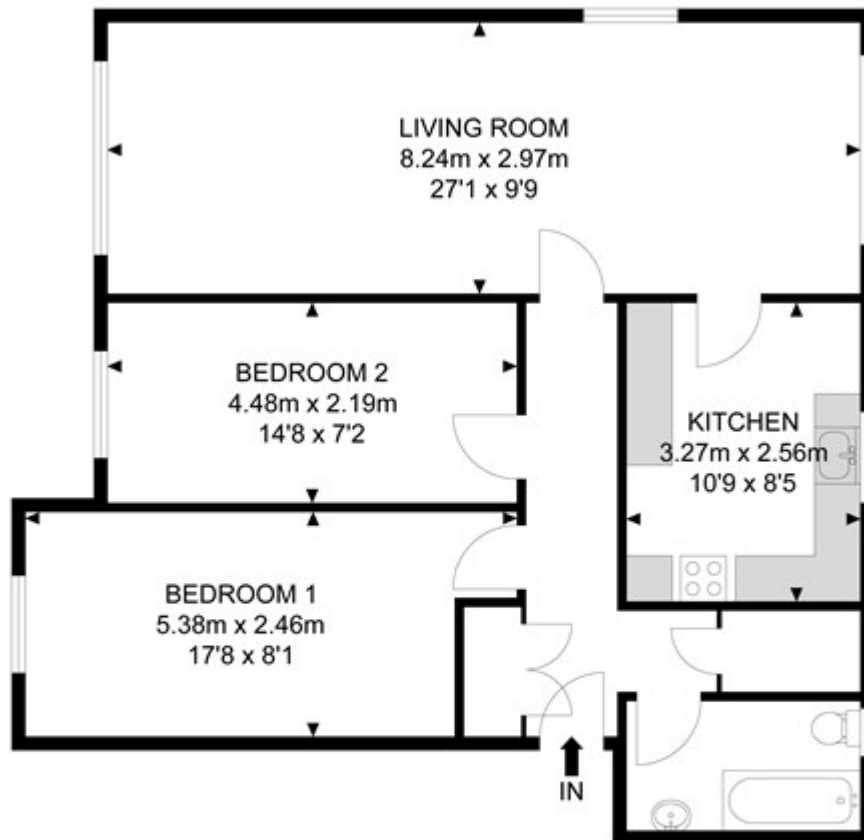


St Marys Court, Bow Road, Bow

£1,850 PCM

St Marys Court



2nd Floor



APPROX. GROSS INTERNAL FLOOR AREA 745.93 SQ FT / 69.3 SQM

Whilst every attempt has been made to ensure the accuracy of the floor plan contained here, measurements of doors, windows, rooms and any other items are approximated and no responsibility is taken for any error, omission or mis-statement. This plan is for illustrative purposes only and should be used as such by any prospective purchaser. The service, system and appliances shown have not been tested and no guarantee as to their operability or efficiency can be given.

© SpacePhoto

Photography and Floor Plan