

Merchants House, Collington Street, Greenwich

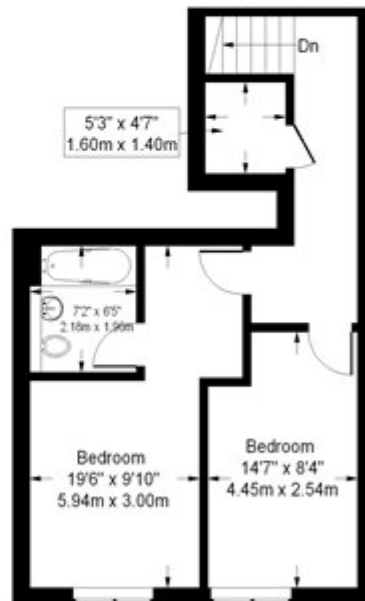
£625,000 Leasehold

Merchants House

Approximate Gross Internal Area
86.1 sq m / 927 sq ft



First Floor



Second Floor

This plan is for layout guidance only. Not drawn to scale unless stated. Windows and door openings are approximate. Whilst every care is taken in the preparation of this plan, please check all dimensions, shapes and compass bearings before making any decisions reliant upon them. (ID179893)