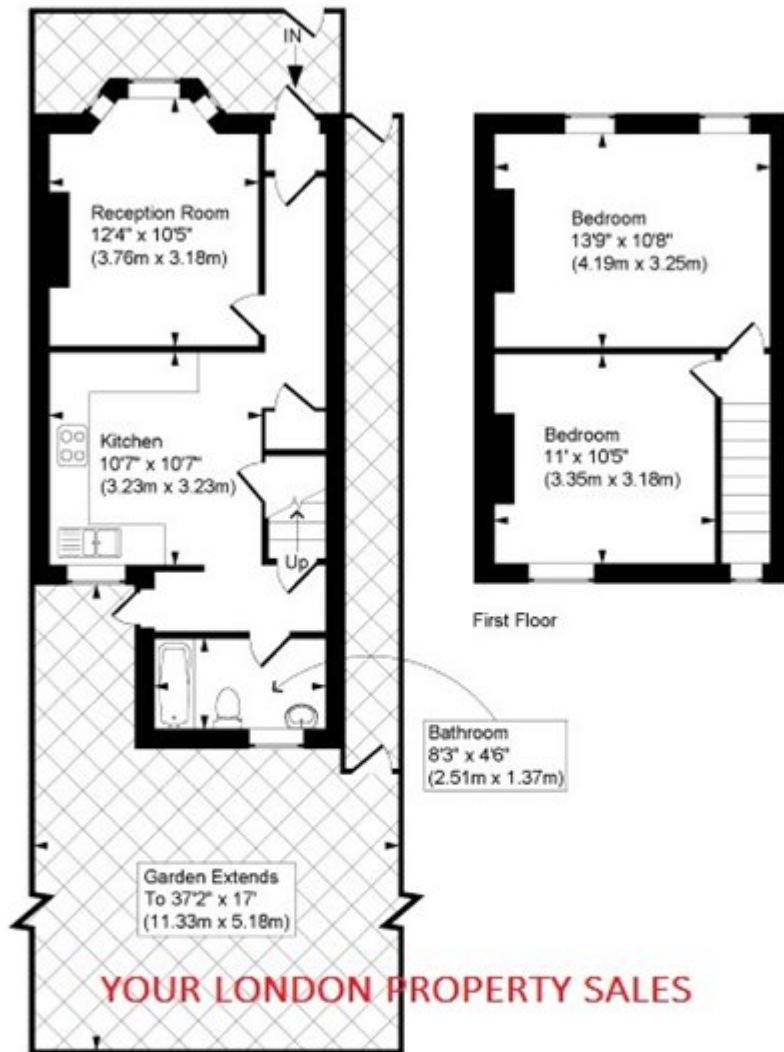


# Gunning Street, Plumstead

## £1,200 PCM

---



Ground Floor

Approximate. Gross Internal Area: 668 Sq. Ft. / 62.1 Sq. M

Drawing Number :

Copyright Jamesis Ltd 2014

Floorplans are for identification and guideline purposes only, not to scale. Compliant with RICS code of measuring practice.

