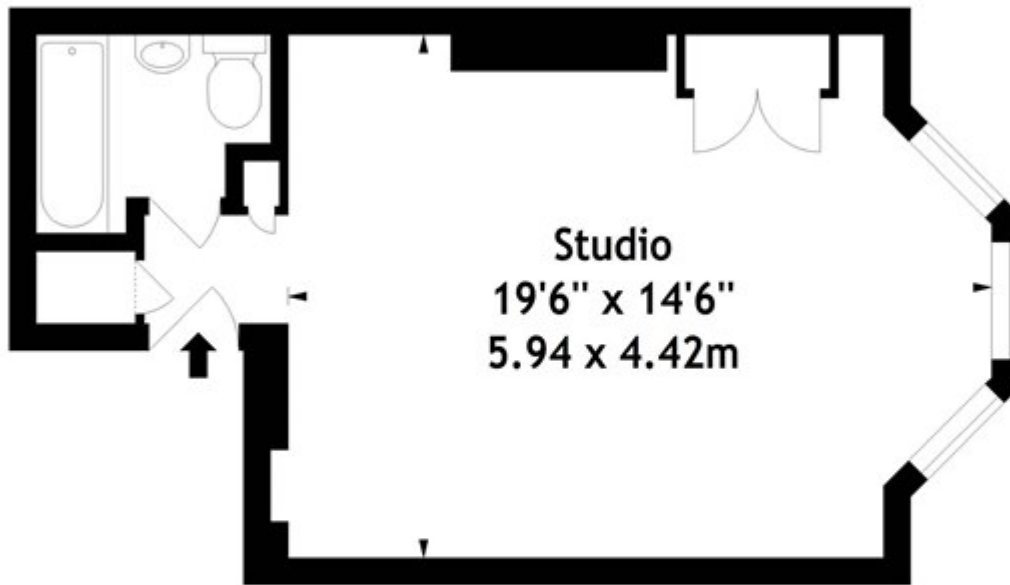


Fitzjohns Avenue, Hampstead

£395 PW

Fitzjohns Avenue, NW3
Approx. Gross Internal Area
318 Sq Ft - 29.54 Sq M



Raised Ground Floor

Measured in accordance with RICS guidelines. Every attempt is made to ensure accuracy, however all measurements are approximate.

This floor plan is for illustrative purposes only and is not to scale.

© Datagraphy Ltd 2014

Photographs * Floorplans * Virtual Tours

Tel: 0845 643 4401 www.datagraphy.com