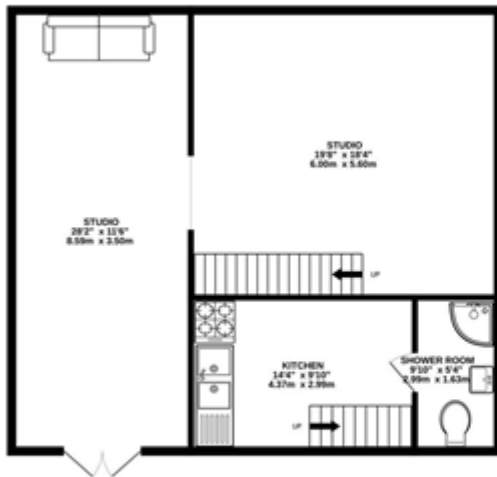


# St James Road, London

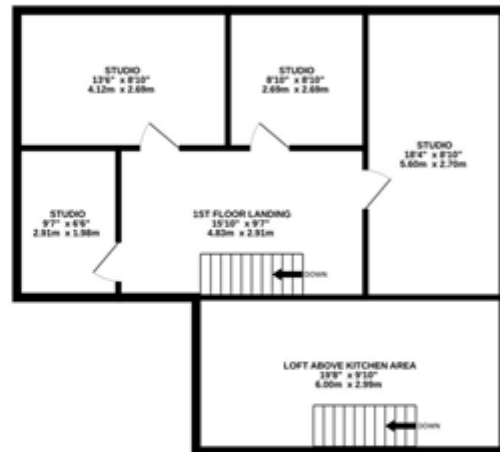
## £1,800 PCM

---

THE CAVE - GROUND FLOOR  
879 sq.ft. (81.7 sq.m.) approx.



THE CAVE - 1ST FLOOR  
766 sq.ft. (71.2 sq.m.) approx.



THE CAVE - 330 ST JAMES ROAD SE1 5JX

TOTAL FLOOR AREA: 1645 sq.ft. (152.8 sq.m.) approx.

Whilst every attempt has been made to ensure the accuracy of the floorplan contained herein, measurements of doors, windows, rooms and any other items are approximate and no responsibility is taken for any error, omission or mis-statement. This plan is for illustrative purposes only and should be used as such by any prospective purchaser. The services, systems and appliances shown have not been tested and no guarantee as to their operability or efficiency can be given.  
Made with Metropix ©2024

