

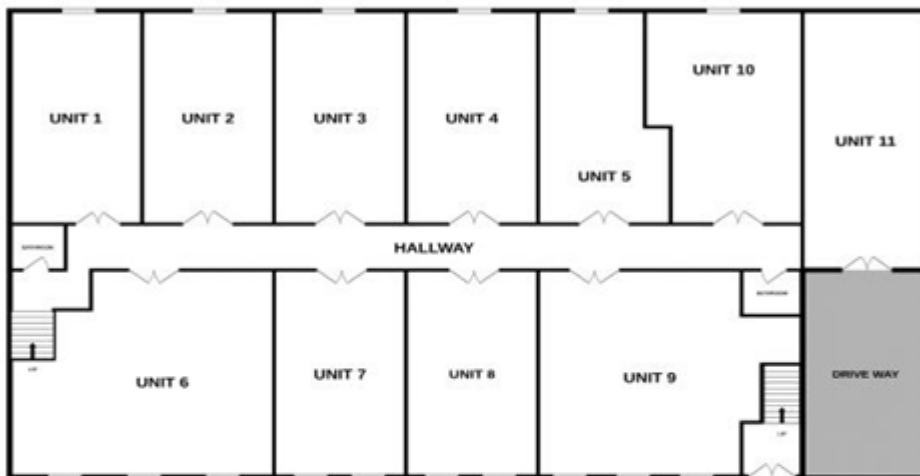
# Darnley Road, London

## £500 PCM

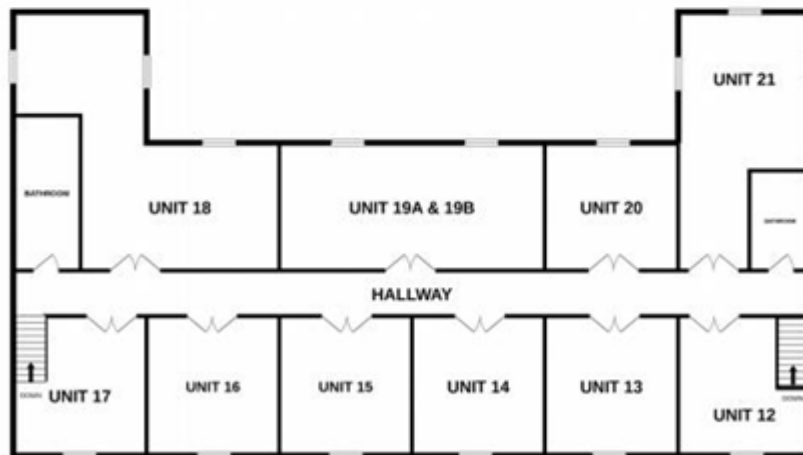


## Stephen House

1b Darnley Road E9 6HQ



### Ground Floor



Plan Not Drawn To Scale

### 1<sup>st</sup> Floor



# Darnley Road, London

## £500 PCM

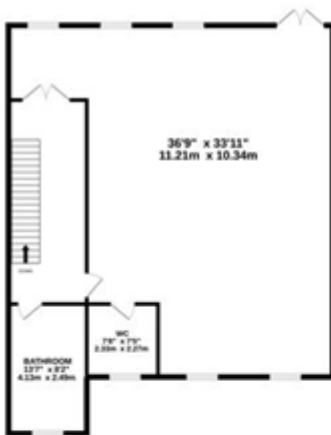
BASEMENT  
1652 sq.ft. (153.4 sq.m.) approx.



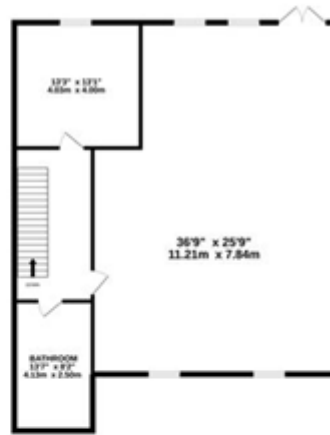
GROUND FLOOR  
1279 sq.ft. (118.8 sq.m.) approx.



1ST FLOOR  
1296 sq.ft. (120.4 sq.m.) approx.



2ND FLOOR  
1296 sq.ft. (120.4 sq.m.) approx.



BASEMENT / GROUND FLOOR / 1ST FLOOR / 2ND FLOOR 1C DARNLEY ROAD E9 6QH

TOTAL FLOOR AREA : 5523 sq.ft. (513.1 sq.m.) approx.

Whilst every attempt has been made to ensure the accuracy of the floorplan contained here, measurements of doors, windows, rooms and any other items are approximate and no responsibility is taken for any error, omission or mis-statement. This plan is for illustrative purposes only and should be used as such by any prospective purchaser. The services, systems and appliances shown have not been tested and no guarantee as to their operability or efficiency can be given.

Made with Metropix ©2022