

# Station Road, Loughton

£1,475,000 Freehold



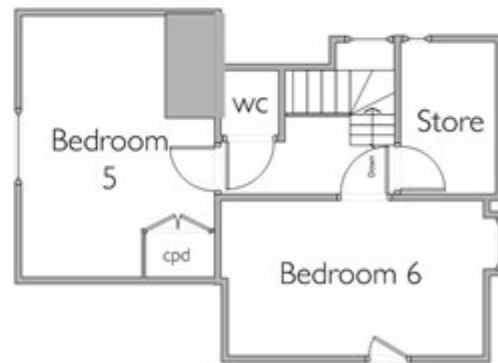
## GROUND FLOOR

Gross Internal Floor Area  
(using measurements taken  
at approx 1.5m headheight  
in areas with sloping ceilings):

Approximately  
2279 sq.ft. / 212 sq.m.



## FIRST FLOOR



## SECOND FLOOR