



Japan Services Rent Ltd

Sales, Lettings & Property Management

2 Queens Drive, West Acton, London, W3 0HA

Tel: 0208 752 0445 Fax: 0208752 0219

www.japanservices.co.uk email: properties@japanservices.co.uk



Delamere Road, Ealing, W5 3JP

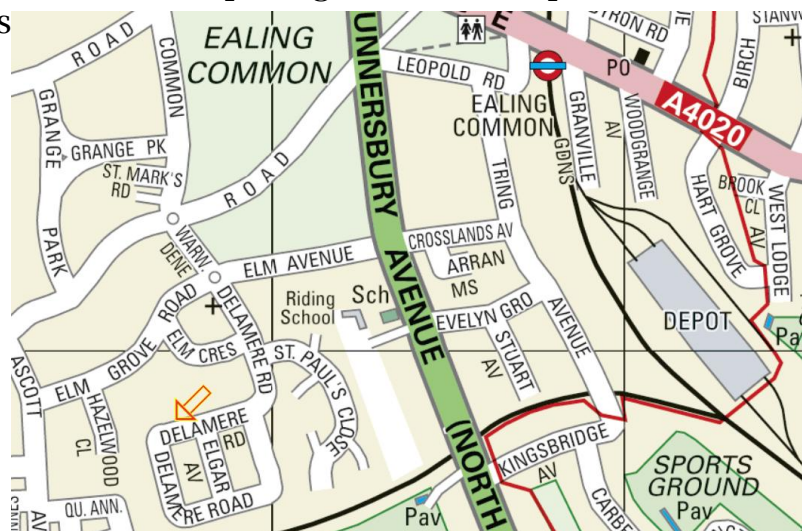
PRICE: £949,950

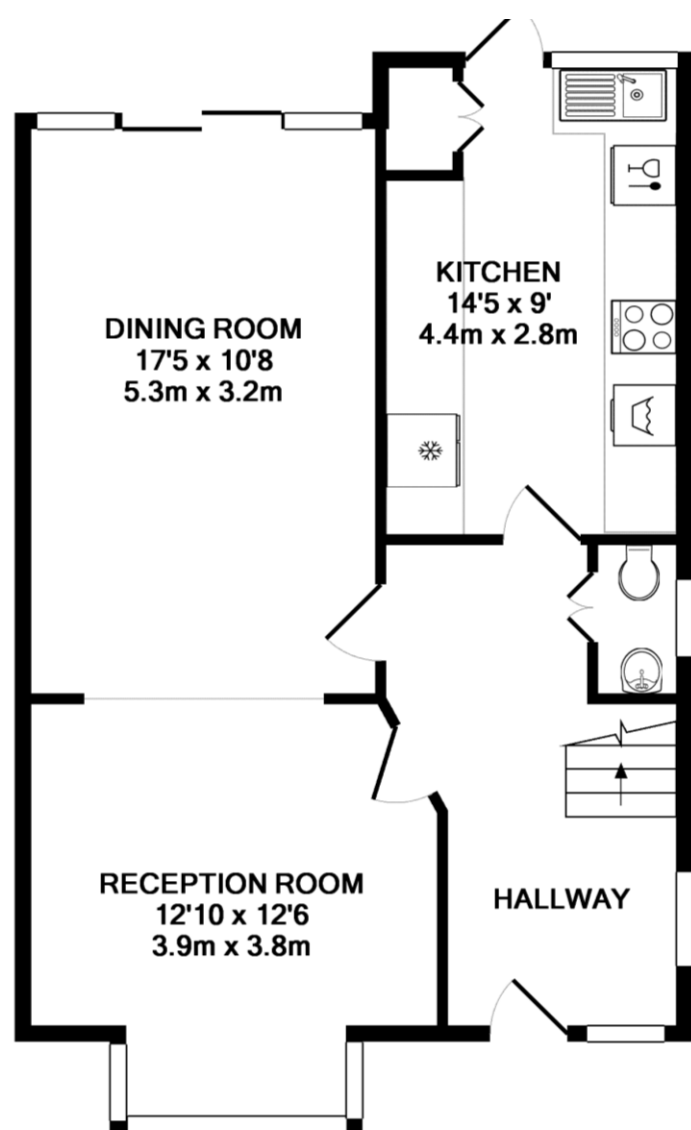


We are delighted to present for sale this bright and spacious three bedroom semi-detached house located in one of Ealing's most popular areas. This inviting property is perfectly suited as a family home, as the green spaces of Popefield Playing Fields, Ealing Common as well as the green expanse of Gunnersbury Park are all within walking distance from the property. It is organised over two floors and boasts some truly **fantastic features** including a **charming reception** room, a modern kitchen opening into a well kept back

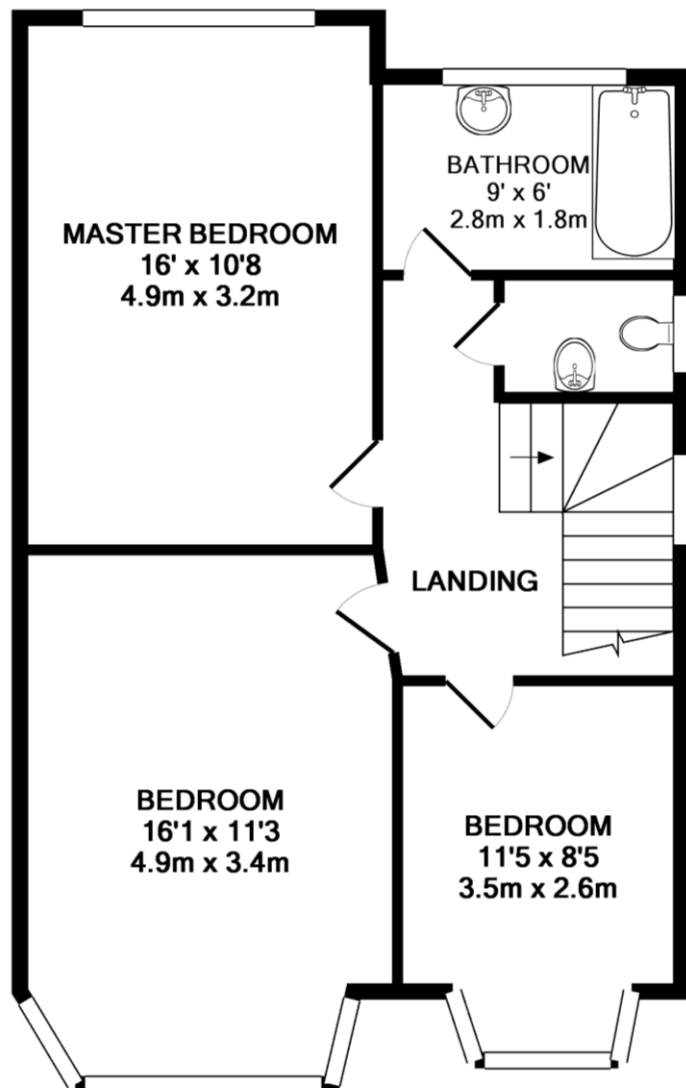
garden and a dining area with large windows offering an **abundance of natural light**. The ground floor further comprises of an entrance hall, the main hallway, and a guest cloakroom. The front of the house features a large garage, a garden and a driveway.

Two lovely double bedrooms and one single as well as a fully equipped family bathroom with a separate WC are situated on the first floor. **Excellent transport** links include the Ealing Common tube station (Piccadilly and District Lines) as well as Ealing Broadway (Central & District lines, First Great Western Heathrow Connect and coming Crossrail).





GROUND FLOOR
APPROX. FLOOR
AREA 575 SQ.FT.
(53.5 SQ.M.)

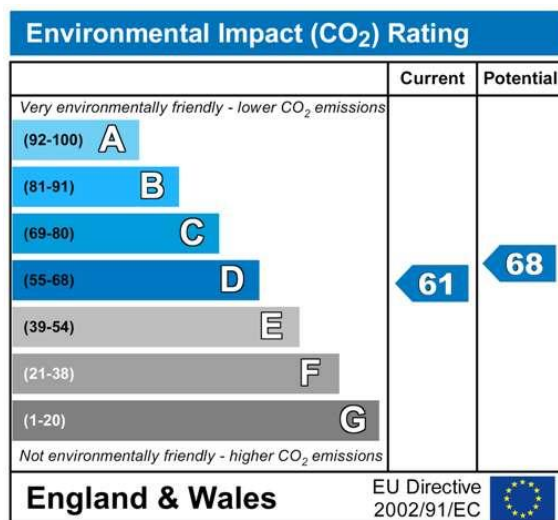
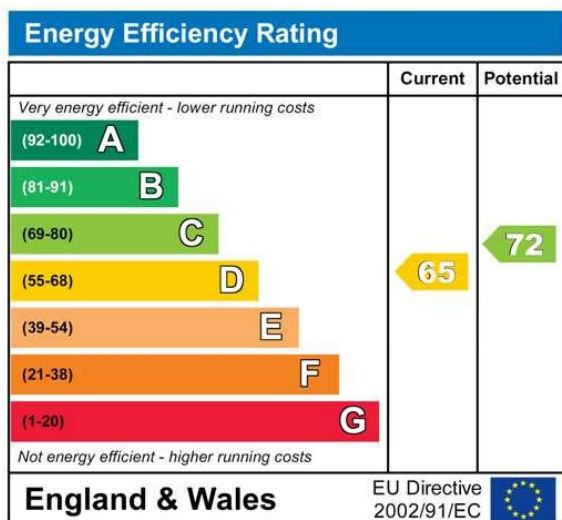


1ST FLOOR
APPROX. FLOOR
AREA 594 SQ.FT.
(55.2 SQ.M.)

TOTAL APPROX. FLOOR AREA 1170 SQ.FT. (108.6 SQ.M.)

Whilst every attempt has been made to ensure the accuracy of the floor plan contained here, measurements of doors, windows, rooms and any other items are approximate and no responsibility is taken for any error, omission, or mis-statement. This plan is for illustrative purposes only and should be used as such by any prospective purchaser. The services, systems and appliances shown have not been tested and no guarantee as to their operability or efficiency can be given

Made with Metropix ©2013



PLEASE NOTE : All property measurements are approximate and have been taken with electronic distance measuring tool into bays and alcoves as appropriate. These particulars do not form part of any offer or contract nor can their accuracy be relied upon by purchaser, who should satisfy themselves by inspection or otherwise. No responsibility can be accepted for any loss of expenses incurred in viewing. Services, heating appliances, any security system and drain systems have not been tested. Particulars of the tenure, Freehold or Leasehold and Ground Rent, Service/Maintenance Charges are All SUBJECT TO CONFIRMATION by the vendor's Conveyances. Internal photographs are reproduced for general information and it must not be inferred that any item shown therein is included with the property