

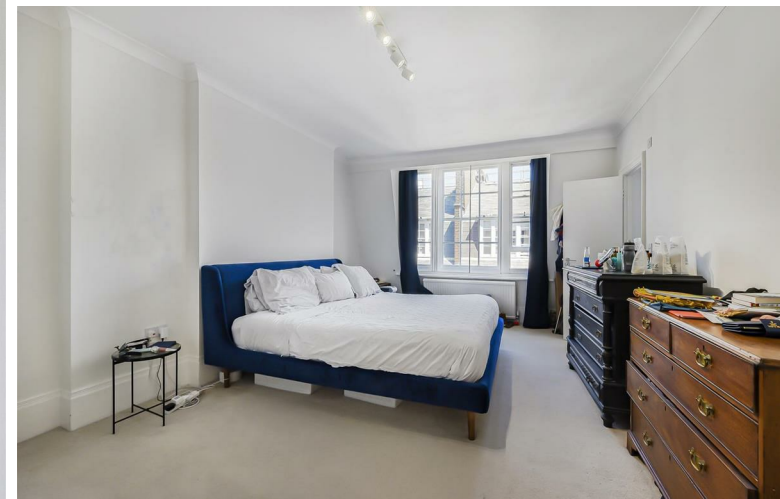


TOP FLOOR LATERAL APARTMENT WITH LIFT AND PORTER

An attractive and well presented, spacious (1711 sq ft) West-facing four-bedroom family flat in a sought-after mansion block with beautiful landscaped communal gardens and 24 hour portage.

This bright and airy property is well-located close to excellent schools, transport and the shopping amenities of the local area.



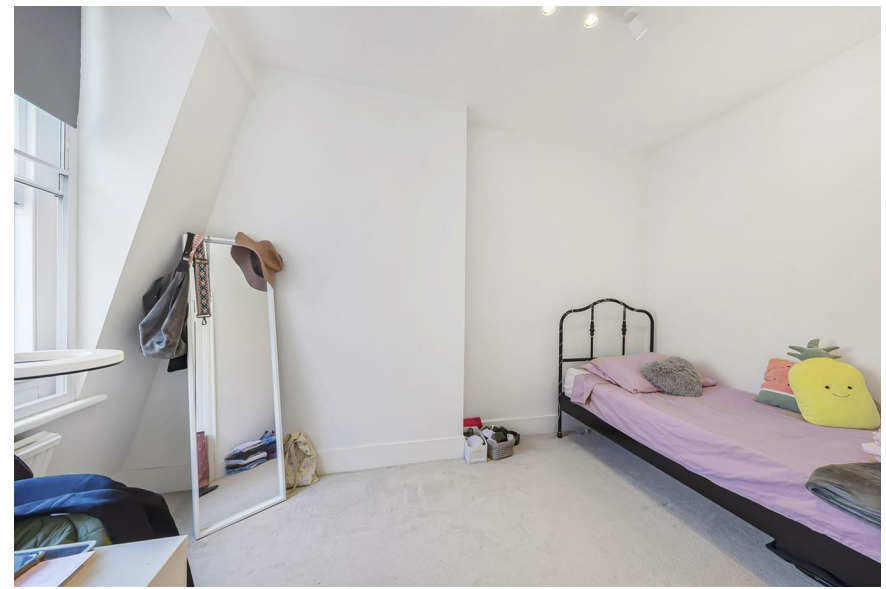


ACCOMMODATION

4 Bedrooms: 2 Bathrooms (Family & En-Suite): Guest WC: Kitchen: Double Reception/Dining Room: Entrance Hallway

LOCATION

Coleherne Court is within easy reach of a wide variety of high end shops and facilities of South Kensington, the shops of Fulham Road, Earl's Court and the Old Brompton Road, and within walking distance of Kensington Gardens and Hyde Park. With direct links via the London Underground from nearby Gloucester Road and S.Kensington stations to the City, the West End and Heathrow, the apartment also benefits from excellent connections via the A4, M4 and M25 and is close to the extensive cycle network linking the area to the West End and City through London's parks.



ACCESS TO COVETED COMMUNAL GARDENS



Terms

Price: £1,500 Per Week

Deposit: 6 weeks rent

Local Authority: RBK&C

Council Tax: Band: G

Coleherne Court Redcliffe Gardens, SW5

Approximate Gross Internal Area
1711 sq ft - 159 sq m

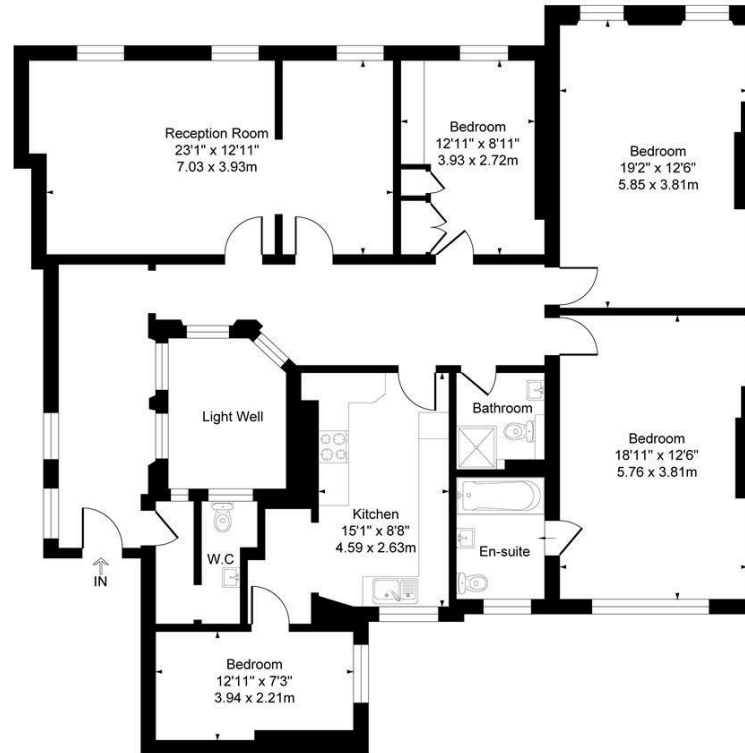


Illustration for identification purposes only, not in scale

FEATURES

- Unfurnished
- Communal garden
- On street/residents parking
- Porter/security
- Secondary Glazing
- Water Rates
- Hot Water
- Council Tax Band: G
- EPC Rating: E
- The Royal Borough of Kensington & Chelsea



0207 370 4343

<https://www.white-estates.co.uk/>

sk@white-estates.co.uk

176 Old Brompton Road, London, SW5 0BA

